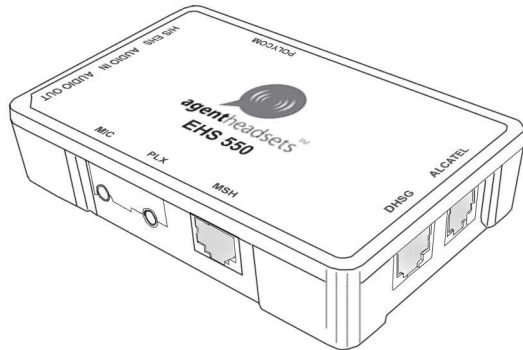


# Agent EHS 550

## DECT Connection Box

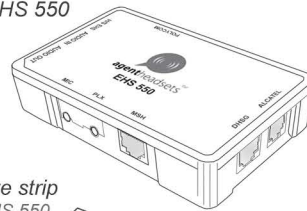
### SET-UP GUIDE



For use with Siemens deskphones

### What's in the box:

Agent EHS 550



Cable A



Cable D



Adhesive strip  
(to fix EHS 550  
to your desk)



### You will also need:

Siemens  
deskphone



Agent W860  
or W880



Cable B  
(supplied with your  
Agent  
W860 or  
W880)



### Compatibility guide:

The Agent EHS 550 is compatible with the following Siemens models:

- Openstage 30
- Openstage 40
- Openstage 60
- Openstage 80
- Optipoint 410
- Optipoint 420
- Optipoint 500
- Optipoint 600

### Other manufacturers:

Other versions of this product are available for the following manufacturers:

Aastra



Alcatel



Avaya



Panasonic



Polycom



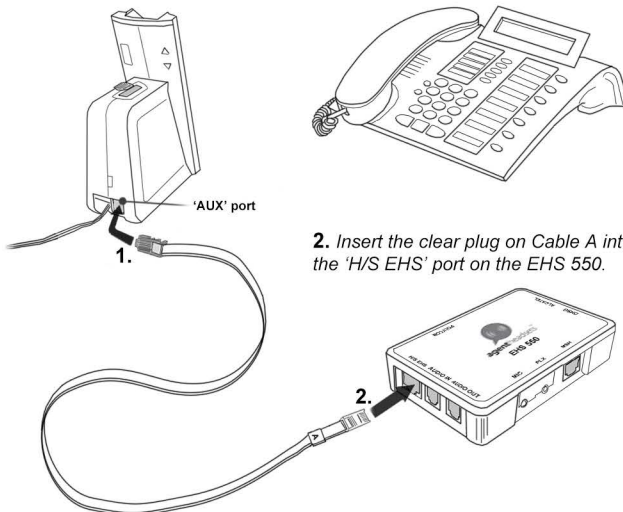
Toshiba



To check which handsets from each manufacturer are compatible, please visit the accessories section of our website: [www.agentheadsets.com](http://www.agentheadsets.com)

### Step 1: Connect Cable A

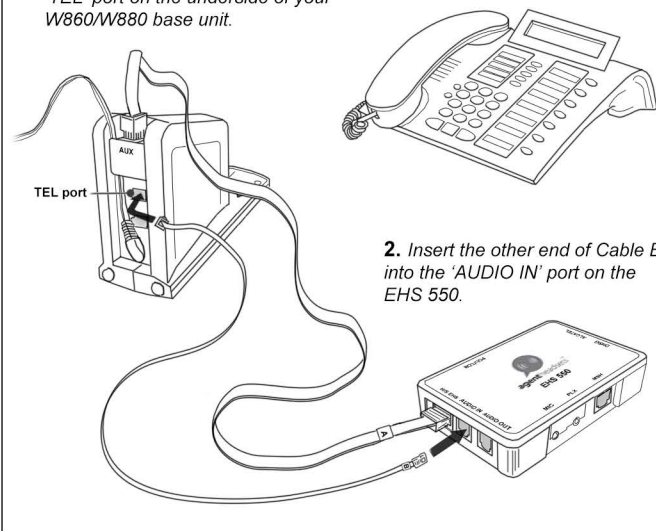
1. Insert the blue plug on Cable A into the 'AUX' port on the back of the W860/W880 base unit.



### Step 2: Connect Cable B

Cable B is supplied with your Agent W860 or W880.

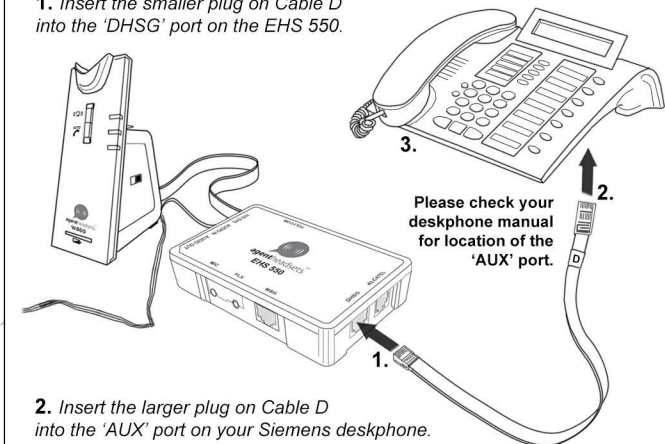
1. Insert either end of Cable B into the 'TEL' port on the underside of your W860/W880 base unit.



2. Insert the other end of Cable B into the 'AUDIO IN' port on the EHS 550.

### Step 3: Connect Cable D

1. Insert the smaller plug on Cable D into the 'DHSG' port on the EHS 550.



2. Insert the larger plug on Cable D into the 'AUX' port on your Siemens deskphone.

3. Ensure you reset your Siemens deskphone before using the EHS 550.

Your EHS 550 will now be ready for use with your Agent W860 or W880 and Siemens deskphone. If you encounter any problems setting up or operating your products, please call Agent headsets on 0845 873 8085.